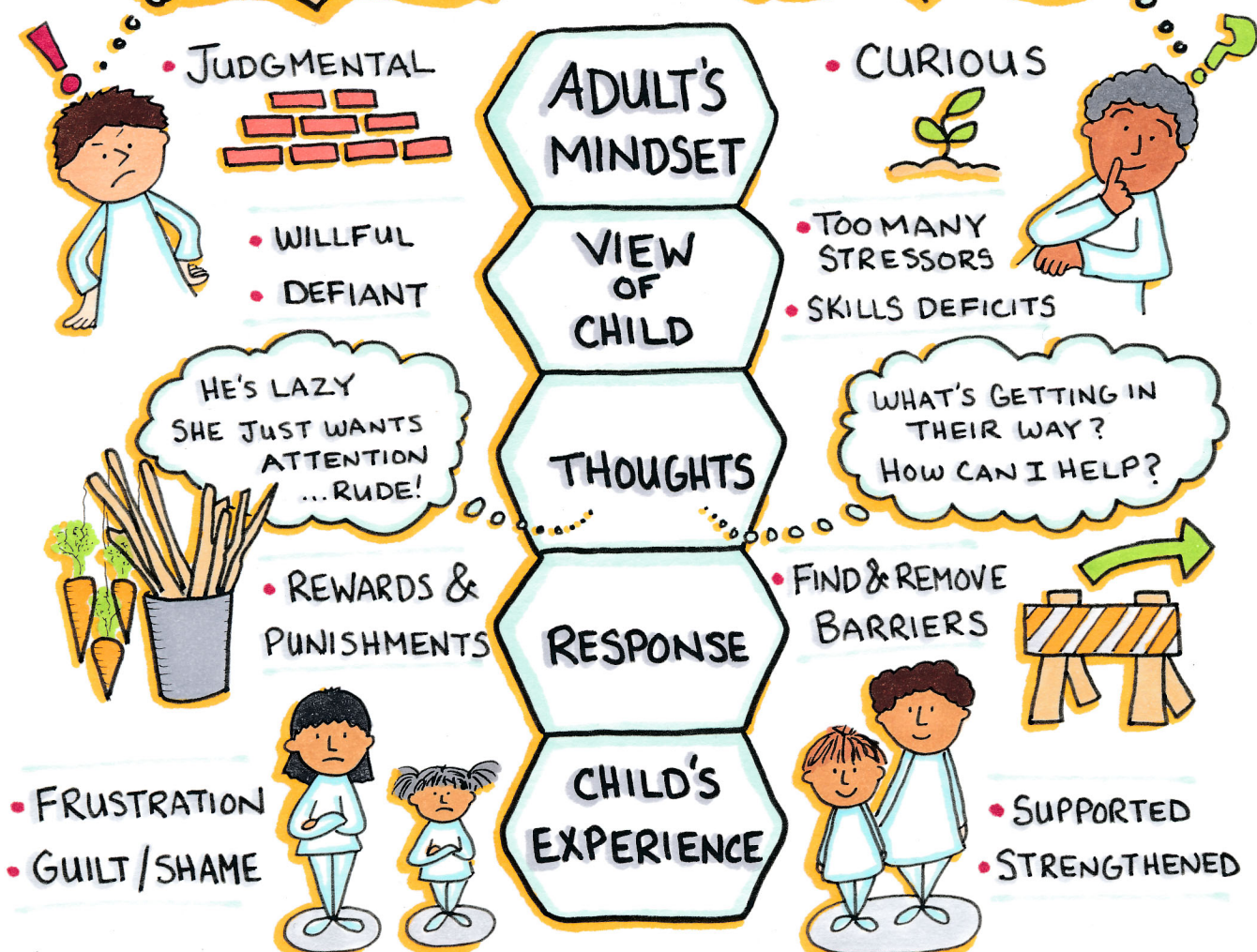
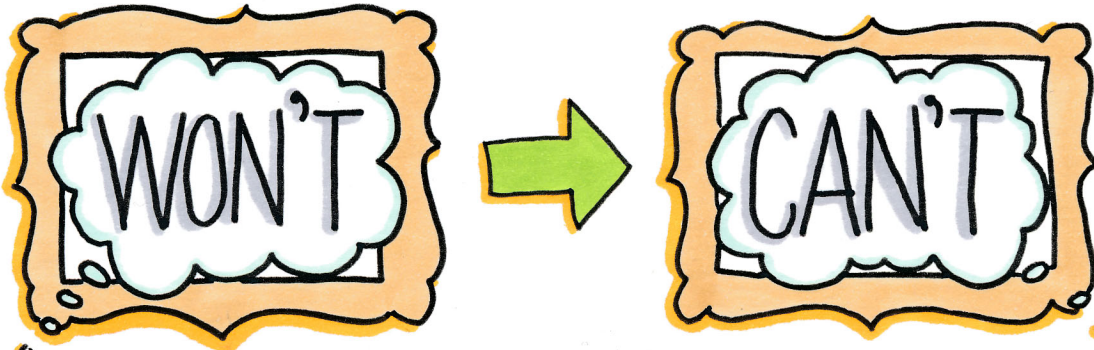


REFRAME THE BEHAVIOUR

"KIDS DO WELL IF THEY CAN"

~ROSS GREENE



"SEE A CHILD DIFFERENTLY, YOU SEE A DIFFERENT CHILD"

~Dr. Stuart Shanker

When kids exhibit challenging behaviour we can be "STRESS DETECTIVES"...finding and removing barriers.

- FIND STRESSORS → REDUCE THEM
- FIND UNMET NEEDS → MEET THEM
- FIND SKILLS DEFICITS → TEACH THEM

@kwiens62